



# GALALA UNIVERSITY

Powered by  
Arizona State University®

---

Profile 2025-2026





# WHO WE ARE

Following the directives of His Excellency, President Abd El-Fattah El-Sissi, Galala University was inaugurated in 2020 to be the first-ever smart-university on the Egyptian territory, adhering to the “Fourth Generation Universities” worldwide.

It is a non-profit institution that aims to provide the youth with the quality education that matches the national and international labor market.

The University is located in Galala City, Suez Governorate, built over 173.5 feddans and offering fifteen promising fields: Medicine, Pharmacy, Physical Therapy, Dentistry, Nursing, Engineering, Computer Science and Engineering, Applied Health Science Technology, Administrative sciences, Basic Sciences, Media Production, Art & Design, Applied Languages, and Food & Food Industries.

These fields comprise more than 60 distinct programs following the credit hours system.

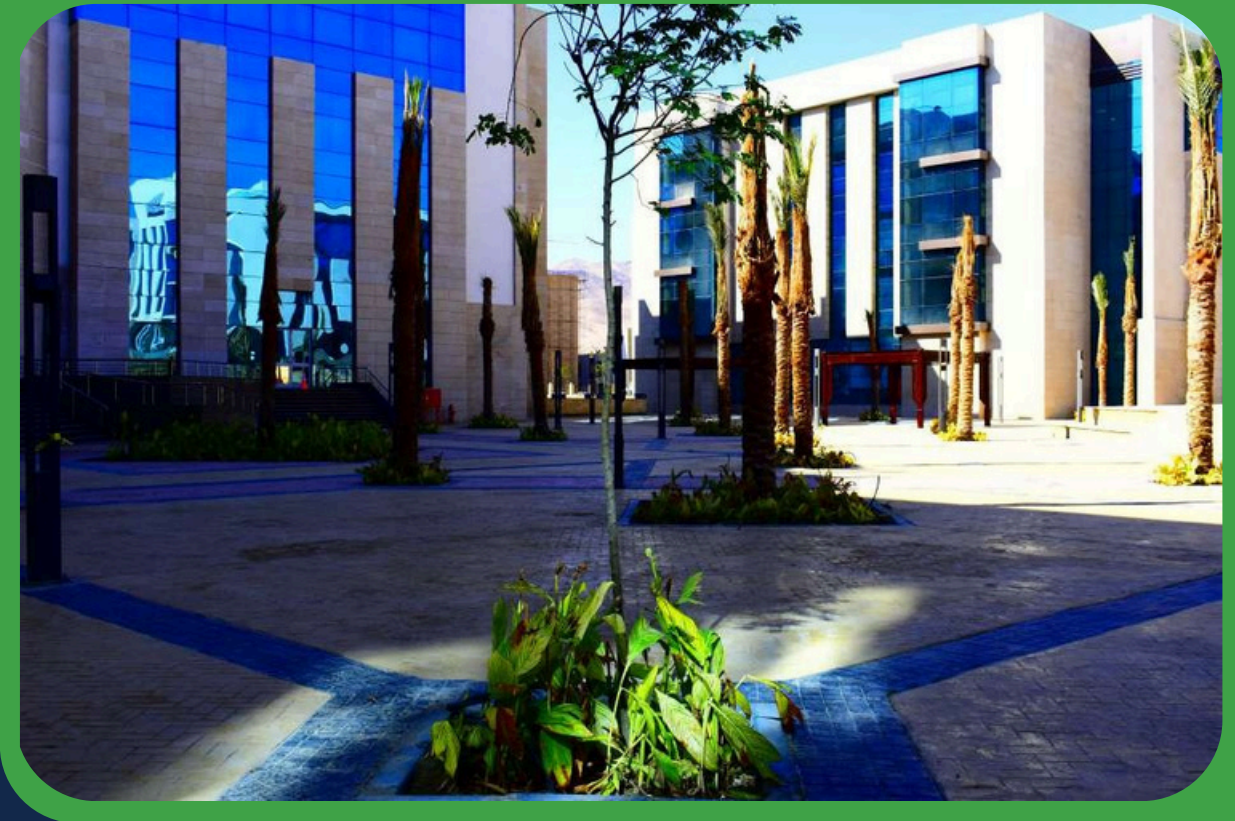
The University has the capacity to accommodate 25,000 students in its final stage of operation.

GU provides its students with the latest technology, facilities, and top-notch academic and administrative staff members.

All staff members work collectively to provide an outstanding learning experience.

Our ambition for our graduates is that they will be ethical, agile thinkers who are competitive in a global economy.

# GU IN NUMBERS



**GU Campus:**

180 Acres

**GU Enrolled Students :**

16000

**GU Alumni :**

1076 (2025)

**GU Staff :**

625 (Both Academic and Administrative Staff )

# OUR MISSION



To build a welcoming, inspiring, and stimulating academic environment which acts as a development hub for the community and enriches wider society through the quality of its graduates and the impact of its research.

A welcoming and stimulating academic environment for diverse students, faculty, and staff.

Opportunities for creative trans-disciplinary research. Sustainability of economic and social development needs in the framework of the community values.

# VISION

Becoming a pioneer world-class university, driving excellence and innovation to serve humanity.

# GOALS

We aim to:

- Provide high quality of learning and strong foundation of transformative knowledge and skills.
- Attract, recruit, retain students, Faculty & Staff who will contribute to the economic prosperity of the nation and global communities.
- Continue to develop comprehensive & integrated co-curricular programs to foster life-long learning and enhance the out of class experience.
- Expand partnerships with alumni and with higher education, and community organizations.
- Provide an understanding and respect for ethnic and cultural diversity.



# International Partnerships



Global partnerships increase the quality of our research, improves teaching and learning, and sparks innovation. In addition to our excellent and intellectually challenging programs, Galala University (GU) has signed a partnership with Arizona State University which offers dual certificates to GU graduates in the fields of Engineering, Computer Science, and Administrative Sciences in 8 futuristic programs: Electrical Engineering, Graphic Information Technology, Software Engineering, Business Administration, Computer Information Systems, Marketing, and Sports Business.

GU also partnered with the Hiroshima University of Japan in research and academic cooperation.

The two parties agreed that Hiroshima University would cooperate with GU, represented by Engineering, Dentistry, and Japanese language education, by hosting fifteen academic staff members to deliver impactful collaborative research and enhance student skills and employability.

This cooperation also provides advanced educational systems, curricula, enhancing scientific and academic dialogue between both parties

Moreover, following its efforts to establish international partnerships with various institutions and universities worldwide, Galala University, the first Egyptian national and government University to join the Consortium's membership, has joined as an affiliate member of the Texas International Consortium (TIEC).

TIEC's partners get the advantage to access 25,000 faculty across 31 universities in the 10th largest economy in the world. Under this membership, Galala University will create a page on the

Consortium's website. Five faculty members will get access, create an account on the partners search part on the website, and promote scientific dialogue between the two parties.

Meanwhile, on the regional level, various protocols were signed with Ain Shams University's Training and Development Center, Tanta University, Armed Forces College of Medicine, and Maritime Academy for Science, Technology, and Maritime Transport which results in scientific and academic research.



# CAMPUS LIFE

GU is surrounded by affluent green areas, which provide a healthy environment and an appropriate atmosphere to practice physical fitness.

Since we recognize the importance of sports for leading a healthy life and maintaining a physical balance, the University focuses on developing sporting excellence and active participation in various sports events and competitions.

We provide outstanding opportunities for students to develop their sports interests and abilities by involving them in diverse activities based on their preferences. GU comprises the following sports facilities:

- Soccer Court
- Volleyball Court
- Handball Court
- Outdoor Track and Field
- Ping-Pong Tables
- Tennis Court
- Gym Hall
- Paddel Court

In addition, GU campus offers both a place to learn and a place to have fun. The students will find a vast number of ways to enjoy themselves, keep busy and make friends on campus and in classes. Through a variety of clubs, students can choose what suit them most.



# FACILITIES

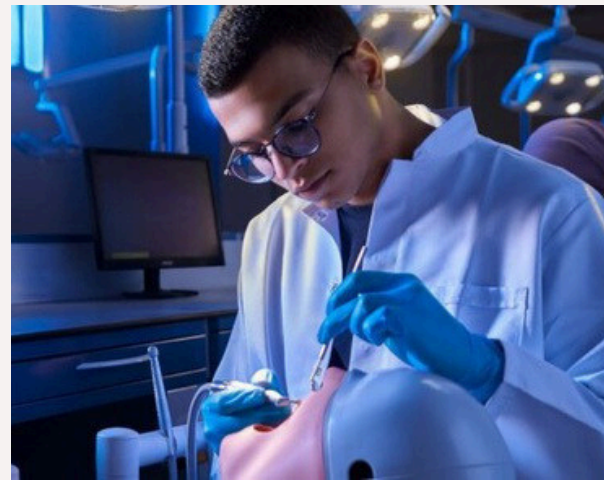
- **Equal Opportunities Unit:**

Galala University (GU) is dedicated to creating an inclusive and welcoming environment for its students. As a student-centric community, GU strives to provide opportunities for students to engage, connect, and grow. Our goal is to offer an outstanding and sustainable academic and non-academic experience for all students. The mission of the Equal Opportunity Unit (EOU) is to ensure that students have equal opportunities to succeed by enhancing their academic and non-academic performance.



- **E-Learning:**

Galala University is equipped with the latest technology to provide its students with an outstanding learning experience, preparing them to be the leaders of tomorrow, capable of facing the outside world with its high competitiveness in the local and international job market.



- **Electronic, knowledge, & Training Services Center:**

The unit aspires to provide distinguished and advanced training programs for individuals and institutions that keep pace with the aspirations of the trainees and keep pace with the country's vision 2030, in addition to Spread awareness of information technology



- **Electronic, knowledge, & Training Services Center:**

The center aims at providing electronic, knowledge and training services through different programs and activities that match the vision of the state 2030 and the vision of Galala University, where these services are characterized by stability and modernity, with openness to the corresponding centers and all higher education institutions locally, regionally and internationally.



## Transportation:

GU maintains an extensive bus service available to all GU community, including staff members and students. Our buses travel between the GU Campus and through neighborhoods all over Cairo and Giza.



## Clinic & Medical Care

GU Clinic offers comprehensive health care services to ensure the well-being of the entire GU community. Provided services include Medical Advice, Treatment, Vaccines, Pharmacy Services, and External care.



## One Stop Shop:

“One-Stop-Shop” always works on providing a friendly environment with compassionate, convenient, comprehensive, and customized student-centered support

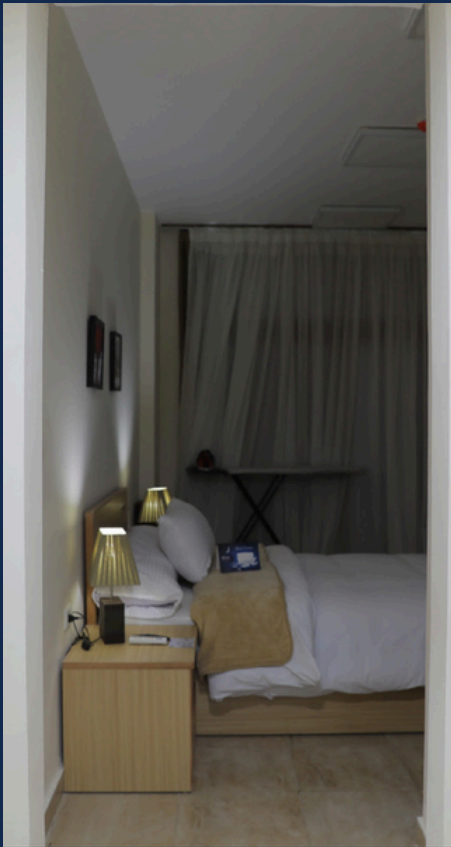
## Career Development & Internships:

GU prepares current students to be future leaders; capable of acquiring a competitive advantage, easing access to different job opportunities on the local and international level. Students can engage in different internship opportunities at different offices at the University, or through our partners from the private sector.



# STUDENT DORMS

GU provides its students with fully serviced accommodation rooms for males and female at very reasonable prices, equipped with free WI FI internet access, a kitchen, and a private bathroom



# Scholarships

Galala University provides a wide range of scholarships for different types of students, collaborating with renowned institutions such as: the Sawiris Distinction Scholarship for Public High School Graduates and Students with Disabilities, the Gifted Student Scholarships (GSS) Program offered by the scholarship program offered by The United International, Innovators, Support, Fund, and States Agency for Development (USAID) on the dual degree programs.



# Sustainability

Environmental Sustainability and serving the community are core values of Galala University. Our holistic ambitions to make Galala University a leader in sustainability education and an example of sustainable living enhancing both the student and staff experience aligning with the country's vision for 2030.

# PROGRAMS

## Healthcare Sector



### Healthcare Sector

Field of Medicine	<ul style="list-style-type: none"> <li>• Medicine &amp; Surgery Program</li> </ul>
Field of Dentistry	<ul style="list-style-type: none"> <li>• Dentistry Program</li> </ul>
Field of Pharmacy	<ul style="list-style-type: none"> <li>• Doctor of Pharmacy (PharmD)</li> <li>• Clinical Pharmacy Program</li> </ul>
Field of Physical Therapy	<ul style="list-style-type: none"> <li>• Physical Therapy Program</li> </ul>
Field of Nursing	<ul style="list-style-type: none"> <li>• Nursing Program</li> </ul>
Field of Applied Health Sciences Technology	<ul style="list-style-type: none"> <li>• Technology of Prosthetic Dentistry Program</li> <li>• Technology of Prosthetic &amp; Orthotic Devices Program</li> <li>• Technology of Radiology &amp; Medical Imaging Program</li> <li>• Technology of Medical Laboratory Program.</li> <li>• Respiratory Therapy Program Technology of Anesthesia &amp; Intensive Care Program</li> <li>• Technology of Occupational Therapy Program</li> </ul>

# Science Sector



## Sciences Sector

### Field of Basic Sciences

- Molecular Biotechnology Program
  - Nano Science & Technology Program
- Track: Physics  
Track: Chemistry Petroleum & Mining
- Geology Program

### Field of Computer Science

- Artificial Intelligence Science Program
- Biomedical Informatics Program
- Computer Science Program

# Engineering Sector



## Engineering Sector

### Field of Computer Engineering

- Artificial Intelligence Engineering Program
- Computer Engineering Program

### Field of Engineering

- Architectural Design & Digital Architecture Program
- Construction Engineering & Specialized Construction Program
- Material & Manufacturing Engineering Program
- Mechatronics & Industrial Automation Program

# Art & Design Sector



## Creative Arts Sector

### Field of Art and Design

- Graphic Design Program
- Animation Program
- Fashion and Textile Design Program
- Interior Architecture Design Program
- Multimedia Design Program
- Furniture Design Program
- Cinematography and Television Program

# Humanities Sector



## Humanities Sector

<b>Field of Media Production</b>	<ul style="list-style-type: none"><li>• Television Production Program</li><li>• Program Advertising Production Program</li></ul>
<b>Field of Administrative Sciences</b>	<ul style="list-style-type: none"><li>• Economics &amp; Political Sciences Program</li><li>• Business Information Systems Program</li><li>• Logistics &amp; Supply Chain Management Program</li><li>• Hotel &amp; Resort Management</li><li>• Financial Technology (FinTech.) Program</li></ul>
<b>Field of Social and Human Sciences</b>	<ul style="list-style-type: none"><li>• Social Psychology Program</li><li>• Japanese Language Program</li></ul>

# Dual Degree Programs with Arizona State University



## Dual Degree Programs

Digital Media Production Program	A Dual Degree Offered by Arizona State University and Galala University.
Business Administration Program	A Dual Degree Offered by Arizona State University and Galala University.
Computer Information Systems Program	A Dual Degree Offered by Arizona State University and Galala University.
Business Administration Program (Sports Business)	A Dual Degree Offered by Arizona State University and Galala University.
Psychology Program	A Dual Degree Offered by Arizona State University and Galala University.
Electrical Engineering Program	A Dual Degree Offered by Arizona State University and Galala University.

# Dual Degree Programs with Arizona State University



## Dual Degree Programs

<b>Mechanical Engineering Program</b>	<b>A Dual Degree Offered by Arizona State University and Galala University.</b>
<b>Software Engineering Program</b>	<b>A Dual Degree Offered by Arizona State University and Galala University.</b>
<b>Information Technology Program</b>	<b>A Dual Degree Offered by Arizona State University and Galala University.</b>
<b>Computer Graphics Technology Program</b>	<b>A Dual Degree Offered by Arizona State University and Galala University.</b>
<b>Information Science Program</b>	<b>A Dual Degree Offered by Arizona State University and Galala University.</b>



**GALALA  
UNIVERSITY**

Powered by  
**Arizona State University®**

15888

[gu.edu.eg](http://gu.edu.eg)

**Thank You**