



# RAJALAKSHMI ENGINEERING COLLEGE

AN AUTONOMOUS INSTITUTION

AFFILIATED TO ANNA UNIVERSITY, CHENNAI



ACADEMIC  
EXCELLENCE



INNOVATION &  
RESEARCH



INDUSTRY  
COLLABORATION



GLOBAL  
OUTLOOK

RAJALAKSHMI ENGINEERING COLLEGE



[www.rajalakshmi.org](http://www.rajalakshmi.org)



# A Foundation of Proven Excellence

**Top 10% in India**

**NIRF India Rankings 2024**  
Engineering Category



**Highest Grade**

NAAC A++ (3.62/4)




**Diamond Rated**  
QS I-GAUGE



**#1 Private Engineering Institution**

In Tamil Nadu & Puducherry  
(Times Engineering)

For Placements (Dataquest)  Dataquest

**Elite Accreditations**



NBA Accredited | AICTE Approved | CII Platinum Rating



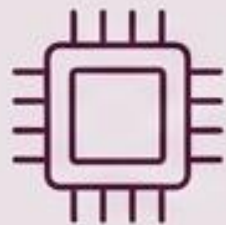
# COURSES OFFERED

## Undergraduate Programmes (B.E./B.Tech./B.Arch.)



### Core Engineering

Aeronautical, Automobile, Civil, Mechanical, Mechatronics, Electrical & Electronics, Electronics & Communication.



### Computing & Emerging Tech

Computer Science & Engineering, Computer Science & Design, Cyber Security, Artificial Intelligence & Data Science, Artificial Intelligence & Machine Learning, Computer Science & Business Systems, Information Technology, Robotics & Automation



### Bio & Process Engineering

Bio-Medical, Bio-Technology, Chemical, Food Technology



### Design

Architecture

## Postgraduate Programmes (M.E./M.Tech./MBA/M.Arch.)

- Avionics
- Communication Systems
- Computer Science & Engineering
- Engineering Design
- Embedded Systems Technologies
- Medical Electronics
- Bio-Technology
- Data Science
- Master of Business Administration
- Urban Design
- Digital Architecture

## RESEARCH PROGRAMMES

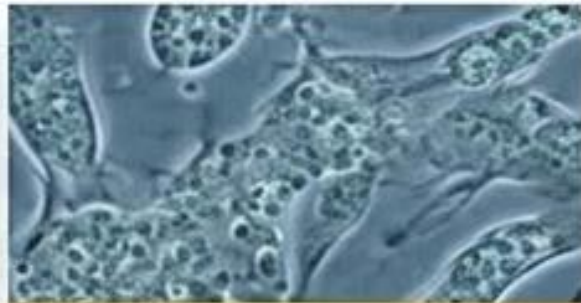
- Anna University recognised our Institution as a **'Research Institute'** to offer Ph.D. / M.S (by Research) Programmes in all departments.



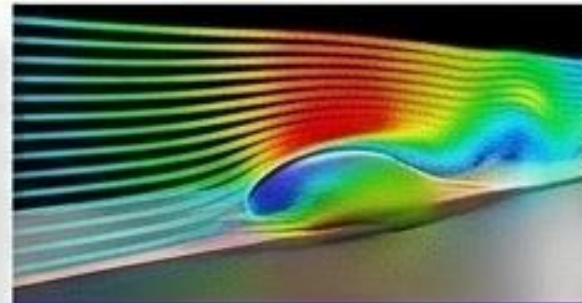
# The Innovation Engine: Centers of Excellence.



**Assistive Technology**



**Biofilms**



**Computational Fluid Dynamics (CFD)**



**Digital Manufacturing**



**Data Science**



**Electric Vehicles**



**Embedded Technologies**



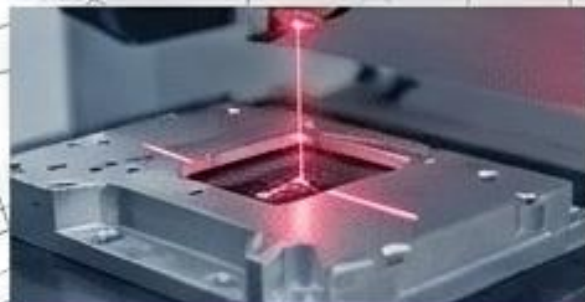
**Food Products and Process Design**



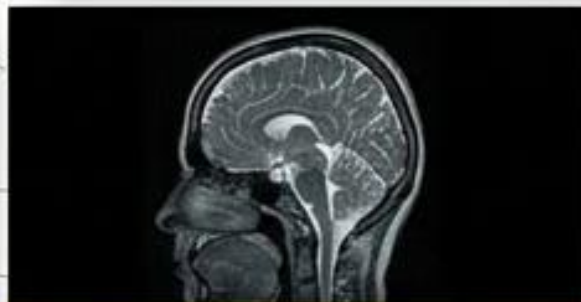
**High-Speed Jet Flows**



**Internet of Things**



**Machine Vision**



**Medical Imaging**



**MEMS & Microfluidics**



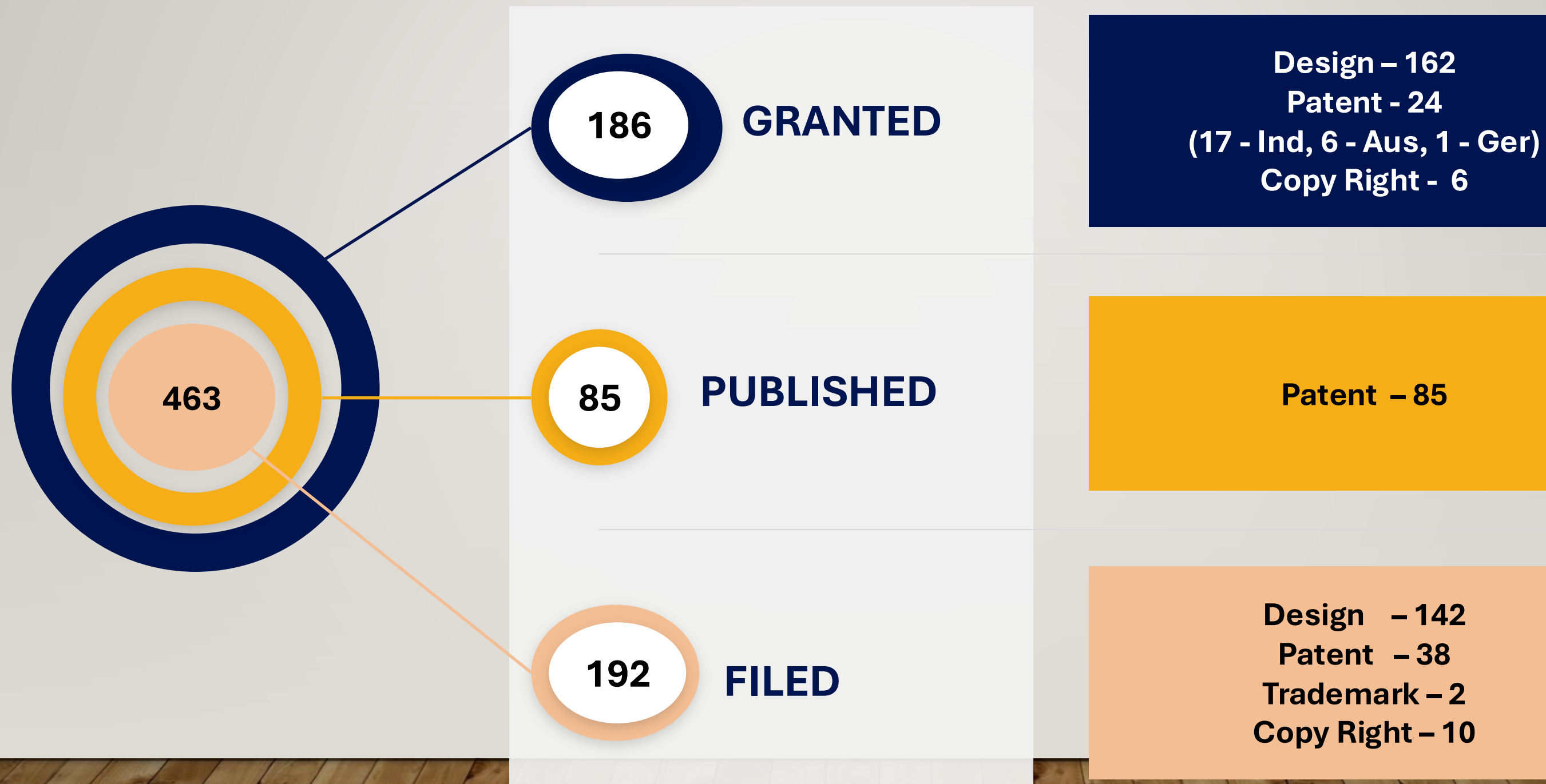
**Renewable Energy**



**Sustainable Construction Materials**



# IPR – PATENTS, DESIGNS & COPYRIGHTS



# Global Connections: Chennai's International Academic Partnerships

## North American Collaborations

21 Major Partnerships in the USA and Canada

- USA**
- |                  |                   |
|------------------|-------------------|
| Arizona State    | UC Berkeley Ext   |
| Binghamton       | Utah              |
| Missouri         | SFSU              |
| Michigan State   | SUNY              |
| CSU              | UT Ballas         |
| Northern Arizona | UC Davie          |
| Edinboro         | Wisconsin         |
| Alamo            | Aurora            |
| Regina           | WPI               |
| UC Berkeley Ext  | Northeastern      |
| Utah             | UT Health Science |

- Canada**
- University of Ottawa

## European & United Kingdom Network

Strengthening Ties Across the UK and Continental Europe

- |                             |                                |
|-----------------------------|--------------------------------|
| <b>UK</b>                   | <b>Germany</b>                 |
| University of Wolverhampton | University of Applied Sciences |
| University of Plymouth      |                                |
| <b>Spain</b>                | <b>Czech Republic</b>          |
| University of Viggo         | University of Pardubice        |
| University of A Coruna      |                                |
| <b>France</b>               | <b>Poland</b>                  |
| University of EVRY          | Poznan University              |

## Asia-Pacific Reach

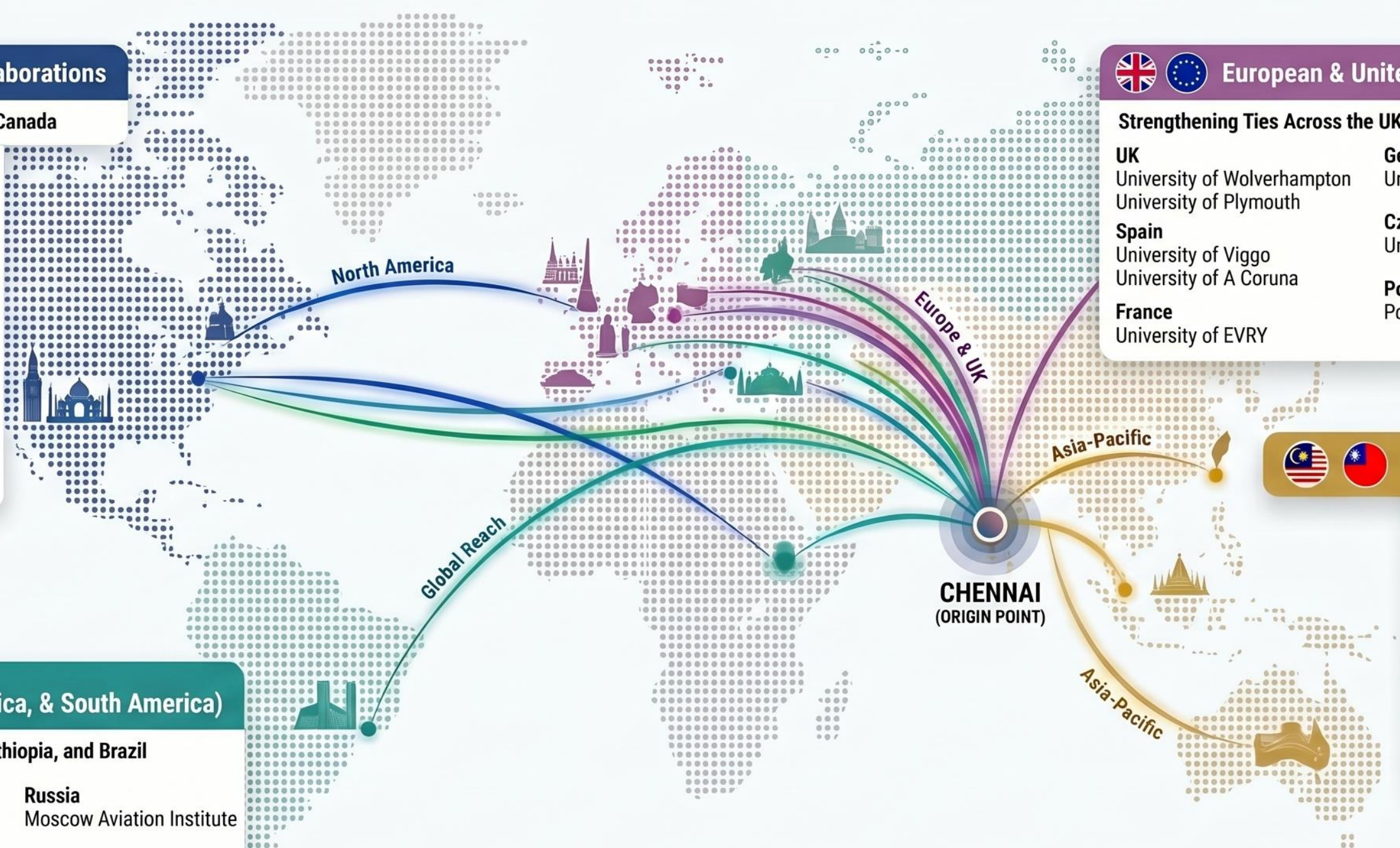
Key Alliances in the Asia-Pacific Region

- Australia**  
Swinburne University
- Malaysia**  
Mahsa University
- Taiwan**  
Ming Chi University  
Taipei University

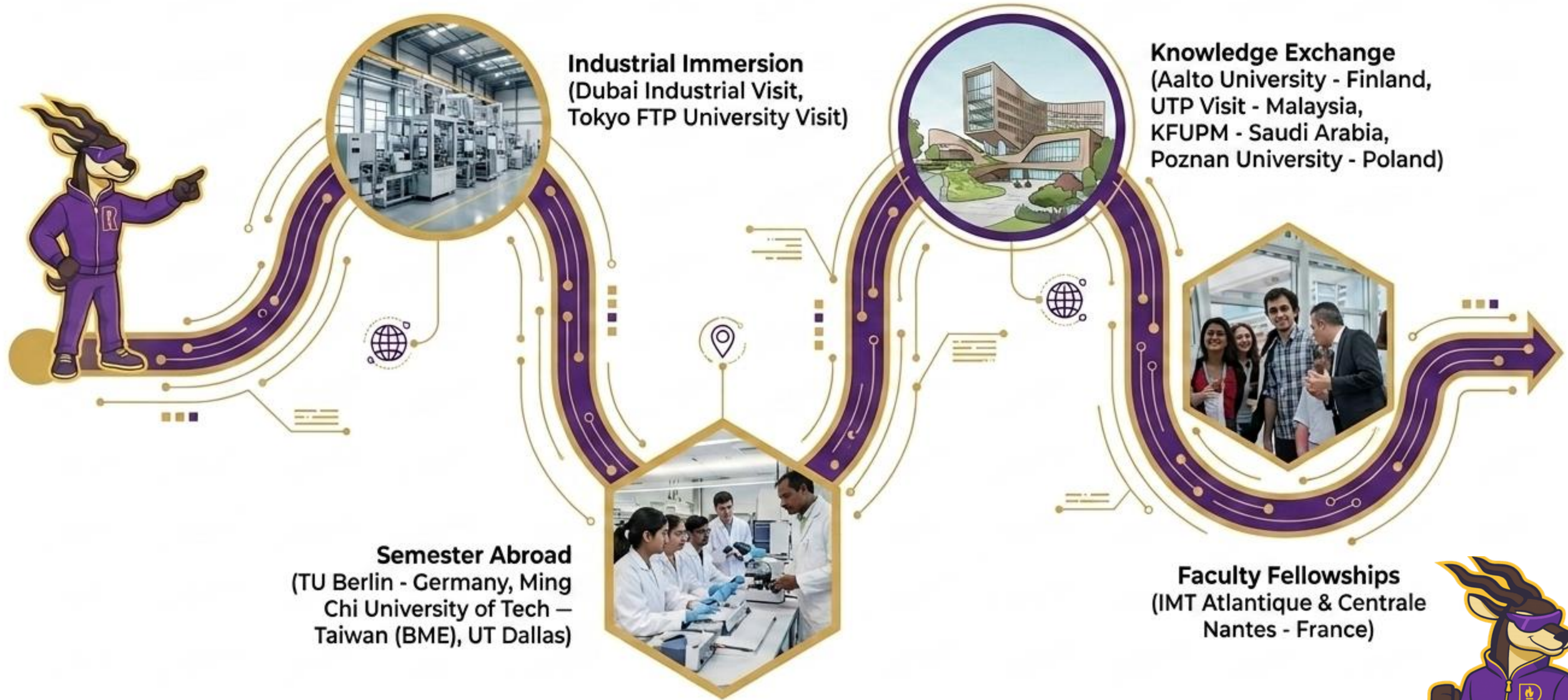
## Global Expansion (Eurasia, Africa, & South America)

Bridging Continents: Russia, Turkey, Ethiopia, and Brazil

- |                |                    |                           |
|----------------|--------------------|---------------------------|
| <b>Turkey</b>  | <b>Brazil</b>      | <b>Russia</b>             |
| Altinbas       | University of Juiz | Moscow Aviation Institute |
| Istanbul Gedik | De Fora            |                           |
| Erzurum Tech   | Unip               | <b>Ethiopia</b>           |
| Istanbul Aydin |                    | Bahir-Dar University      |



# Cross-Border Collaboration in Action.



# Faculty visit through INTERNATIONAL COLLABORATIONS



FACULTY VISIT  
IMT ATLANTIQUE, FRANCE



FACULTY VISIT  
CENTRALE NANTES, FRANCE



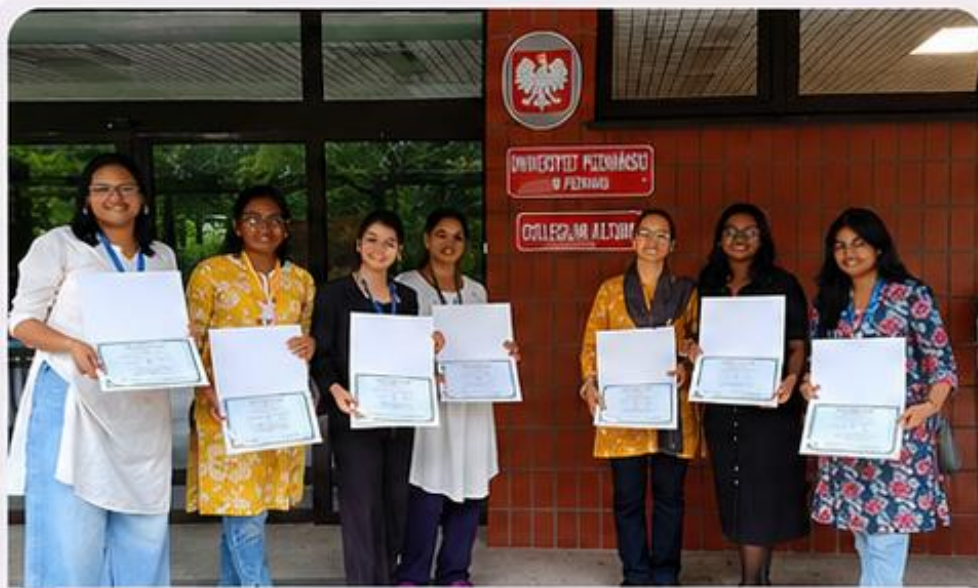
FACULTY VISIT  
GERMANY, UNIVERSITY OF APPLIED SCIENCES



FACULTY VISIT  
SERBIA, UNIVERSITY OF BELGRADE




# Students visit through INTERNATIONAL COLLABORATIONS




 STUDENT VISIT -  
POZNAN UNIVERSITY, POLAND



 STUDENT VISIT -  
TOKYO, JAPAN




 STUDENT VISIT -  
DUBAI, UAE




 STUDENT VISIT -  
INDONESIA



 STUDENT VISIT -  
KFUPM, SAUDI ARABIA



 STUDENT VISIT -  
MALAYSIA



 STUDENT VISIT -  
MING CHI UNIVERSITY,  
TAIWAN



# Students visit through INTERNATIONAL COLLABORATIONS



STUDNET VISIT -  
ALATO, FINLAND



STUDNET VISIT -  
BERLIN, GERMANY



STUDENT VISIT -  
TAIWAN, MCUT



STUDENT VISIT -  
TOKYO, JAPAN 2



STUDENT VISIT -  
TU BERLIN, GERMANY



STUDENT VISIT -  
WARSAW UNIVE, POLAND



# Code. Create. Connect

Uniting global minds to build, innovate, and create impact together



## Global Collaboration

Bringing together students and faculty from around the world.



## Cultural Exchange

Sharing ideas, perspectives, and experiences across borders.



## Innovation in Action

Turning ideas into real-world solutions through technology.



## Recognizing Excellence

Celebrating creativity, collaboration, and outstanding contributions.



## Industry Exposure

Learning beyond classrooms through visits, workshops, and real-world insights.



## Building Connections

Strengthening friendships and creating memories that last a lifetime.



# FACILITIES



## SIX AXIS INDUSTRIAL ROBOT



Advanced robotic systems enabling hands-on learning in automation, programming and industrial applications.



## BOSCH CENTRE



Industry-collaborative facility equipped with cutting-edge tools and technologies for skill development in automation, automotive systems and industrial engineering.



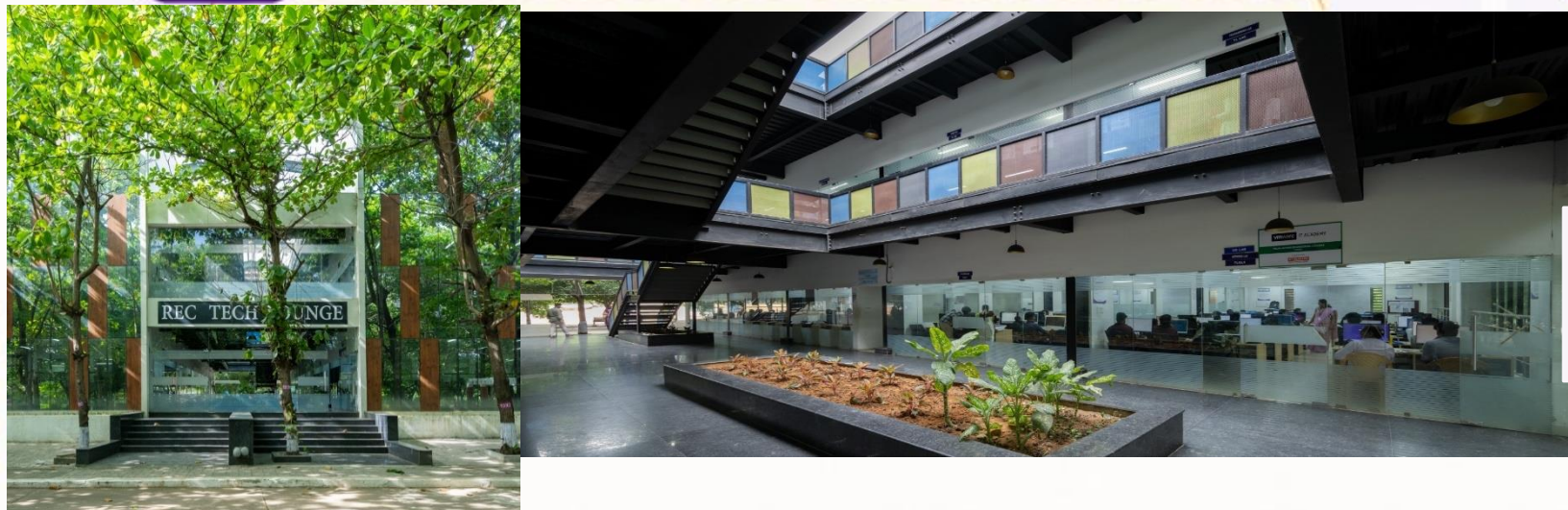
## 3D SCANNING



Provides capabilities for reverse engineering, product design validation, and rapid prototyping using advanced 3D scanning technologies.



## REC – TECH LOUNGE



## ISAAC ASIMOV Lab



# SPORTS FACILITIES

A premium recreational hub featuring a world-class swimming pool & a state-of-the-art **Life Fitness gym** — designed for holistic student well-being



## LIFE FITNESS GYM

State-of-the-art equipment and training spaces to build strength, endurance, and a healthier you.



## SWIMMING POOL

A world-class swimming pool for recreation, relaxation, and overall well-being.



# SPORTS FACILITIES

Our Commitment to an Active Campus



## BASKETBALL COURT

A well-maintained basketball court to encourage teamwork, fitness, and friendly competition.



## SQUASH COURT

A dedicated squash court for high-intensity training and skill development.



## FOOTBALL FIELD

A spacious football field that promotes endurance, team spirit, and an active lifestyle.



## MULTI-SPORTS GROUND

A versatile multi-sports ground for a variety of outdoor games and recreational activities.



# The Blueprint for Global Impact: Designing a Premium Ecosystem for Residential Student Life

A 100-acre eco-friendly campus built for holistic well-being.



Air-Conditioned Rooms (Separate Hostels for boys and girls)



Access to Quality Healthcare & 24/7 Ambulance Facility



Hygienic Mess Facility



In-House Theatre for Movie Screenings & TV



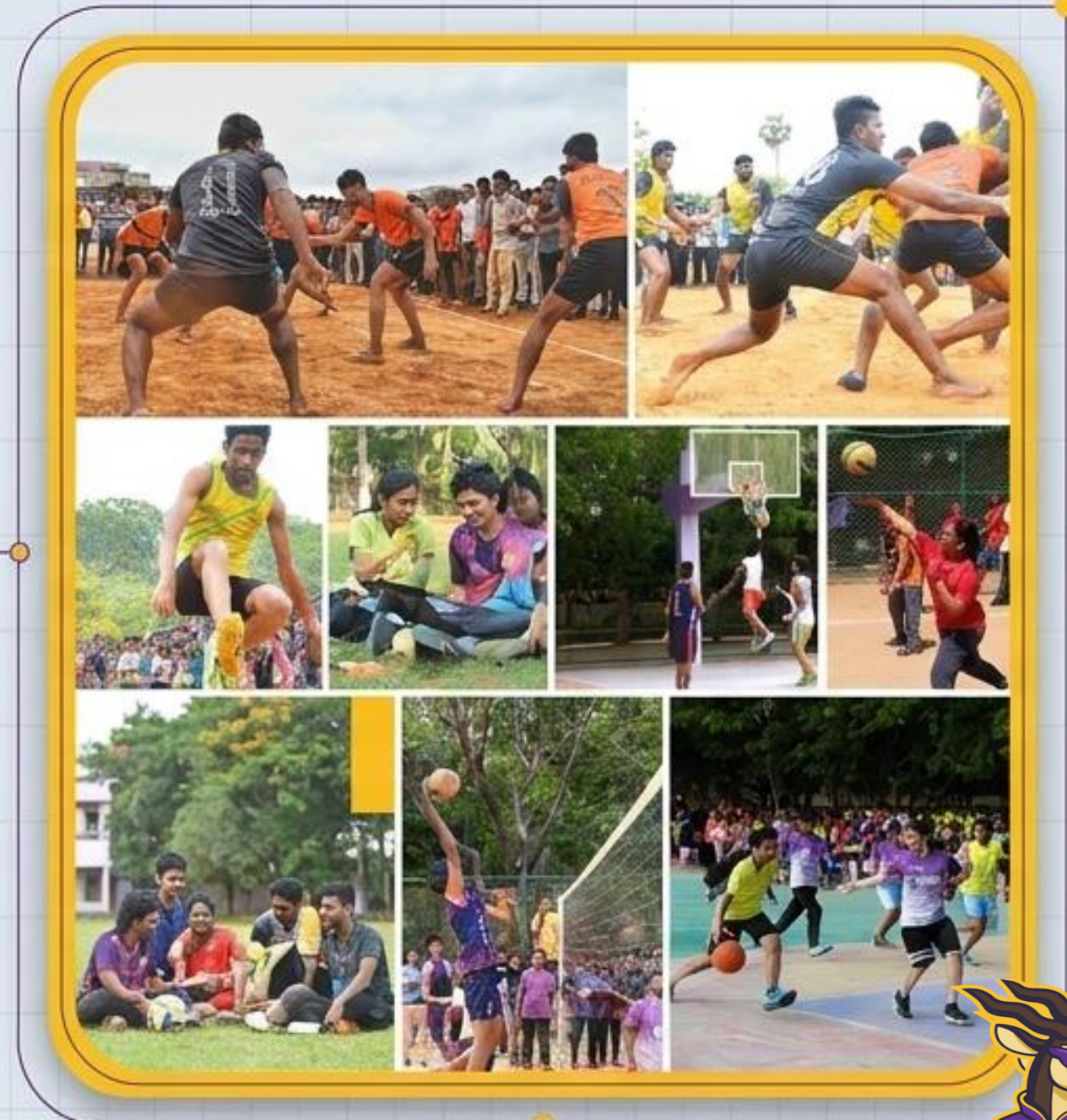
Campus Convenience Stores & ATM



Laundromat Services & 24-Hour Power Back-Up



High-Speed Campus WiFi



# Opportunities for Global Networking

- **Exchange of staff and students (Inbound and outbound)**
- **Semester Abroad Programs**
- **Pathway programs (3.5+1.5 and 3+1+1)**
- **Joint Conferences**
- **Joint Publications**
- **Immersion programs, Internships and student projects**
- **Cultural Exchange**
- **ERASMUS+**
- **ISRF**
- **Nehru Fulbright**
- **Khorana scholarship for students internships**
- **Mitacs**
- **Any other international collaborations**



THANK  
YOU